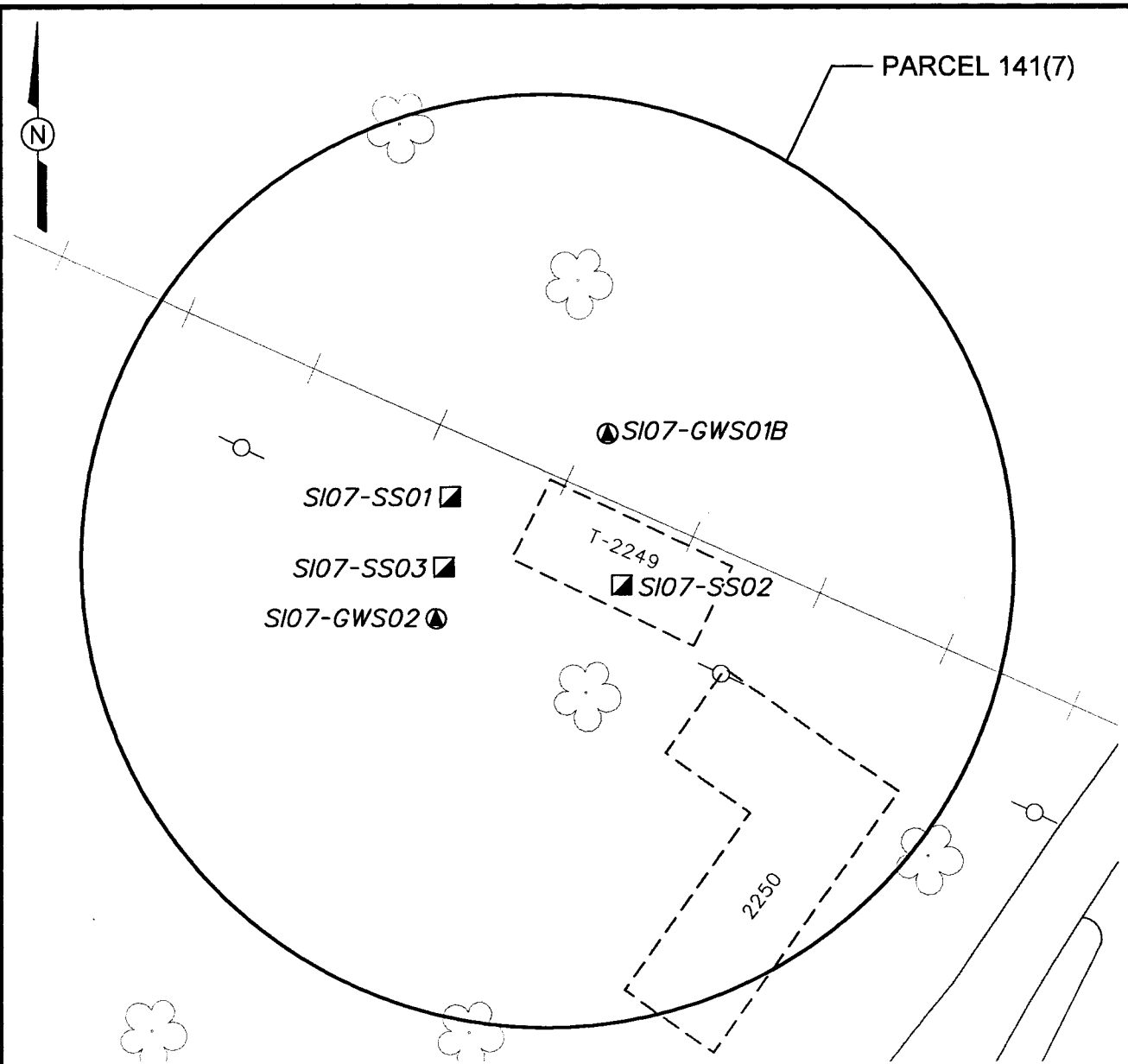


11/16/00	STARTING DATE: 06/13/00	DATE LAST REV.:	DRAFT, CHCK. BY:	INITIATOR/D. LAMB	DWG. NO.: ...774645es.519
10:30:36	DRAWN BY: D. BILLINGSLEY	DRAWN BY:	ENGR. CHCK. BY: D. LAMB	PROJ. MGR.: J. YACOB	PROJ. NO.: 774645



LEGEND

- UNIMPROVED ROADS AND PARKING
- PAVED ROADS AND PARKING
- FORMER BUILDING LOCATIONS
- TREES / TREELINE
- PARCEL BOUNDARY
- RAILROAD
- UTILITY POLE
- GROUNDWATER SAMPLE LOCATION
- SURFACE AND SUBSURFACE SOIL SAMPLE LOCATION

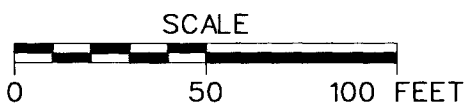


FIGURE 3-3
SAMPLE LOCATION MAP
FORMER GOLF COURSE PESTICIDE
MIX/STORAGE FACILITY
PARCEL 141(7)

U. S. ARMY CORPS OF ENGINEERS
MOBILE DISTRICT
FORT McCLELLAN
CALHOUN COUNTY, ALABAMA
Contract No. DACA21-96-D-0018